

TrakMats™ HEAVY DUTY GROUND PROTECTION MATS

When you've got to get through.....

PRODUCT AND APPLICATION BULLETIN

The following notes are the direct result of carrying out numerous jobs in the field. By following these recommendations you will provide a safe and effective temporary track or access area, an efficient and professional job and a satisfied customer. Please also refer to the Quick Guide on Connection.

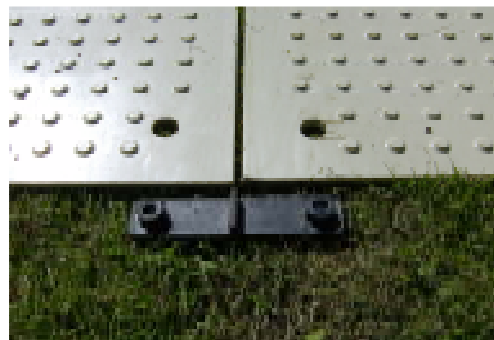
1. Nylon Ties, Urethane 2 Way Connectors and Metal Connectors

It is advised for health and safety reasons to ALWAYS provide connectors and/or nylon ties when mats are delivered to a customer site, and if necessary metal connectors.

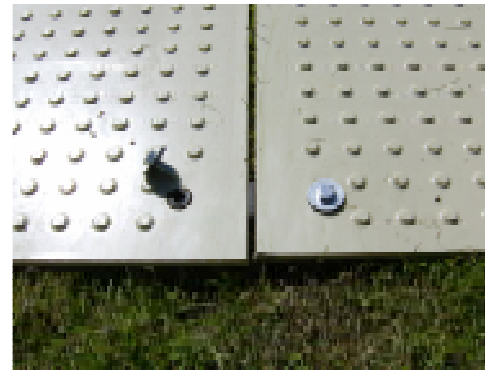
Please see below and also refer to the Quick Guide on Connection.

The use of connection will cover you on any issues of liability if the Trakmats™ spin or move, causing injury or damage to property. Of course, for any efficient and safe temporary ground protection or access, some form of connection, fastening or pinning of the mats is ALWAYS essential. Each Trakmat needs TWO connectors.

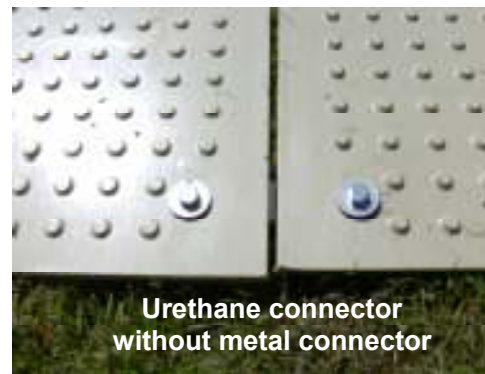
Please also note the NEW 4 WAY connector - use in connecting Trakmats for parking or turning areas (pads). By using 4 way connectors you use 50% LESS 2 way connectors!



Urethane connector goes under the Trakmat with the two cylinders fitting in the holes in each of the TrakMats.



Bolts go into the top of each cylinder



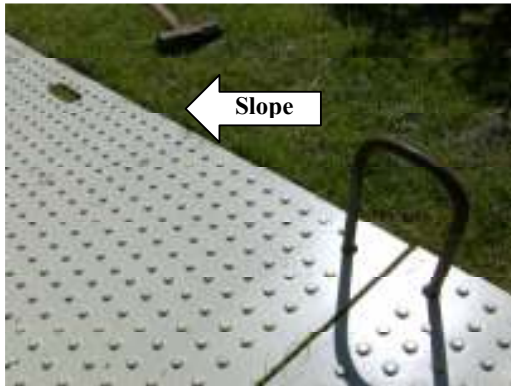
4 Way Connector



Metal connector fits over the Trakmat and the bolts are screwed down through the metal connector and into the cylinders of the urethane connector - forming a "sandwich" - metal - mat - urethane.

2. Trakmats on Slopes or Cambers

When installing Trakmats on a slope or a track with a camber, you **MUST** use metal U pins in addition to the nylon ties and/or urethane connectors. The pins can be placed through the hand cutouts or through the unused connector holes (there are two at the outside ends and two at the ends of the mats in the middle). The U pins need to be inserted into the ground by club or sledge hammer and the front pin angled in the same direction as the slope (see photo/diagram).



Metal U Pin to strengthen the connectivity on slopes or cambers

If the incline (slope) is steep, or there is heavy and continual equipment running on the Trakmats, it is advised to also use the metal connectors that fit over the mats directly above the urethane connectors underneath the mats as described earlier. The same bolts that fasten the connectors under the mats will also lock down the metal connectors (see diagram).

3. Trakmats on Hard Surfaces

When installing Trakmats (smooth side) over hard surfaces like block paving, concrete or tarmac, you **MUST** use the metal connectors over the urethane connectors to create a more rigid area – literally a solid mat – which will prevent the mats sliding on the hard surface.

In addition, if there is heavy or tracked equipment running and especially traversing, over the mats, the use of 10mm x 100mm masonry studs set into the underneath material, at intervals around the surface of the matted area, will provide further strength and rigidity.

4. Important Notes

4.1 Health & Safety - Connection

Like all temporary access and ground protection solutions, TrakMats **MUST** be connected at all times with connectors and/or metal straps and pin provided. TrakMats Europe will not accept responsibility for damage, personal injury or “unsatisfactory” performance caused by TrakMats that are not connected.

4.2 Steel Tracked Vehicles

Steel tracked vehicles cannot be used on TrakMats unless rubber mats protection is placed over the mats. Rubber mats can be provided for a hire charge by TrakMats Europe. TrakMats Europe will not accept responsibility for damage to the TrakMats caused by the negligent use.

The information contained herein is based on the present state of our knowledge and does not therefore guarantee certain properties. Recipients of these products must take responsibility for observing laws and regulations. Trakmats use and effectiveness are fully subject to ground conditions and a site survey is always recommended. If any problems occur in the use of Trakmats please cease use and immediately notify your agent or Trakmats Europe Ltd directly. Trakmats Europe Ltd is in no way legally responsible for the use and application of Trakmats.

TrakMats Europe Ltd

Unit 5, The Chestnuts, 4 Stortford Rd, Gt Dummow, Essex CM6 1DA
Tel: +08456435388 Fax: +05601279741
Email: sales@trakmatseurope.com
URL: www.trakmatseurope.com